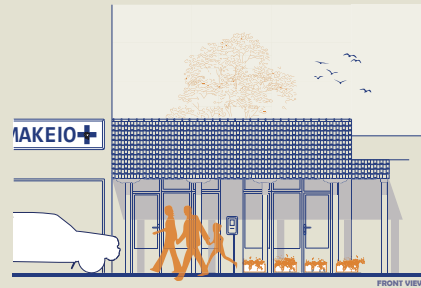


Research by HKU students for the development of "Steki"

Research question:

How can Cotranspose facilitate amenities in Dikea where temporarily residing international artists can connect with the local inhabitants, reducing the information-barrier between them, so that a mutual understanding can be achieved and common goals can be pursued?

Yonah Kalmann
Noor Pieterse
Annelies Ruijs



FRONT VIEW

Edition:

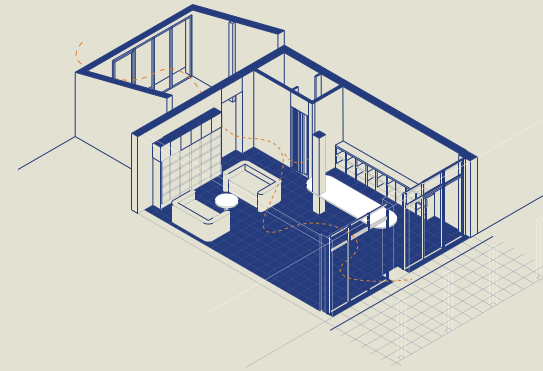
COFUSION

Publication #3:
Final Design

Design criteria:

To be a successful solution to the research question, the design should...

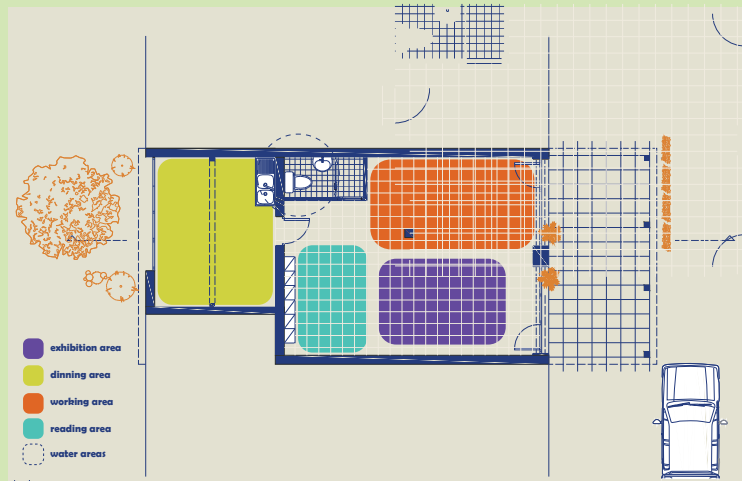
...promote knowledge exchange through contact between the local inhabitants and Cotranspose's participants;
...be accessible and relevant to both young and old, local and international people;
...operate as a resource, that both locals and artists can make use of;
...have a long-lasting, flexible character



'ΣΤΕΚΙ'

(/stéki/) (plural: στέκια) is a hangout spot or stamping ground (place where one is regularly found).

This communal space serves as a meeting place for locals and Cotranspose participants. It has a multipurpose layout that is designed to facilitate information exchange, events, and overall support of the residency program and community.



Archive and library

To contribute to the cultural preservation of the region. Materials such as research papers, works of art and data on local culture will be collected and preserved. This is made available to the general public with the purpose to inform, inspire and entertain.

Information board

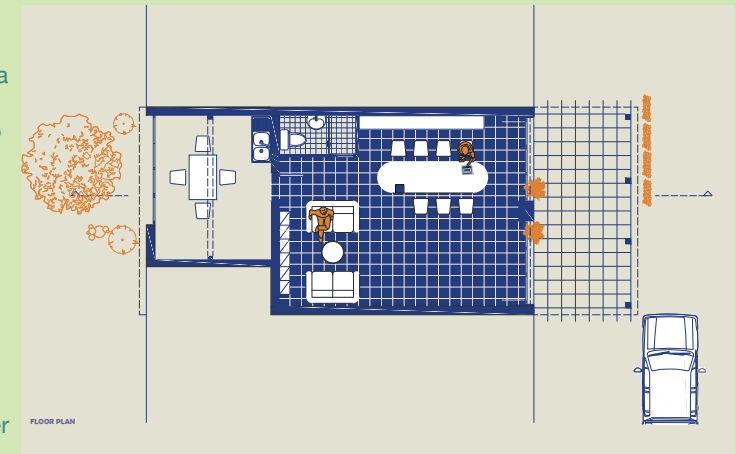
Here you can find information about Cotranspose, its participants and program. Intended to be utilized to convey news and messages. It will contain a code of conduct for using the space as well as an informational map of the region.

Community kitchen

As the research showed, the act of sharing food together is a good way to connect local residents together with the artists. This amenity meets the artists' need to give back by providing a shared meal.

Program

Cotranspose can organize a variety of events such as workshops, movie nights and exhibitions. It is available for (artistic) research as well as for the realization of social installations. In addition the space is open to local initiatives.

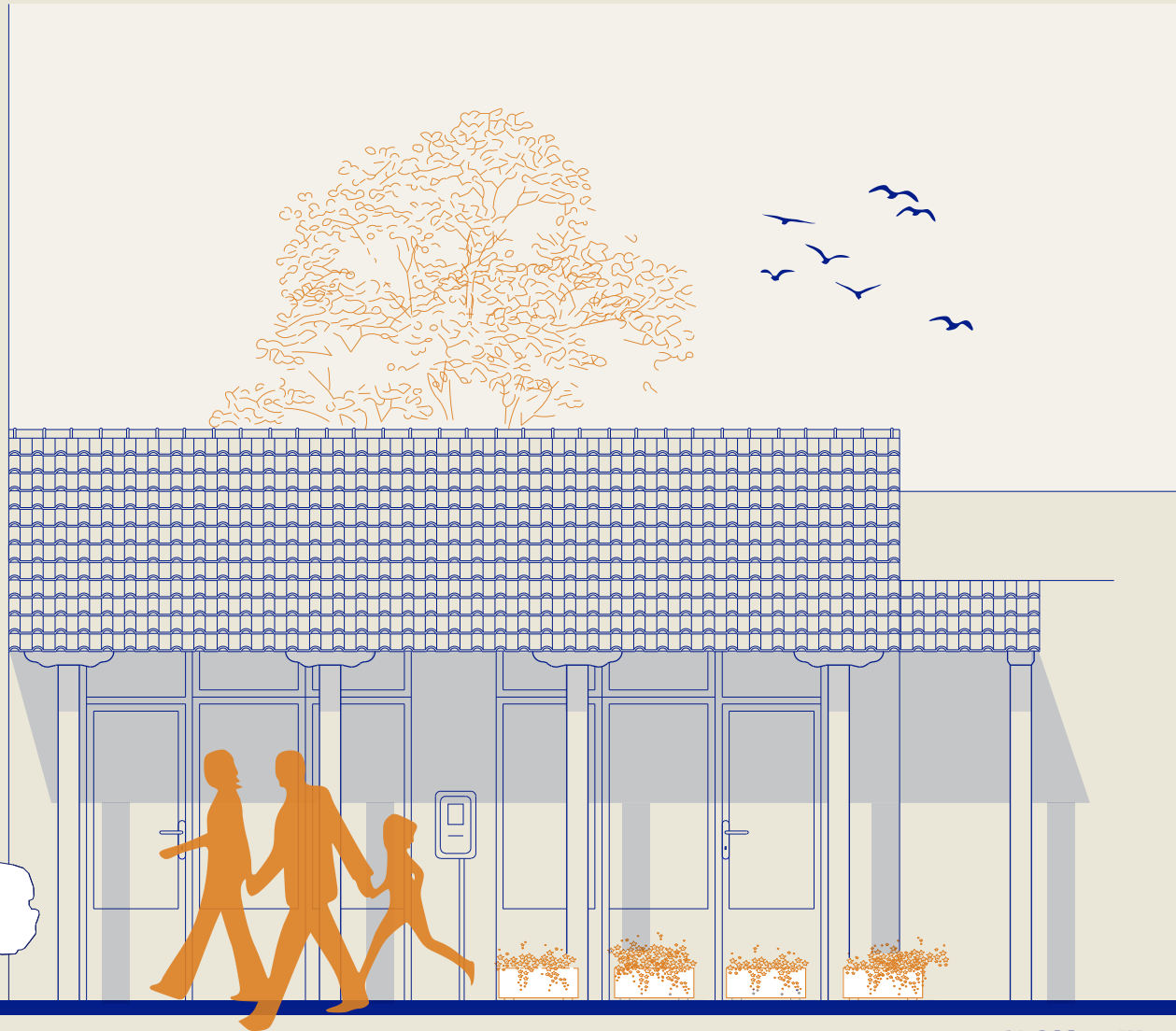
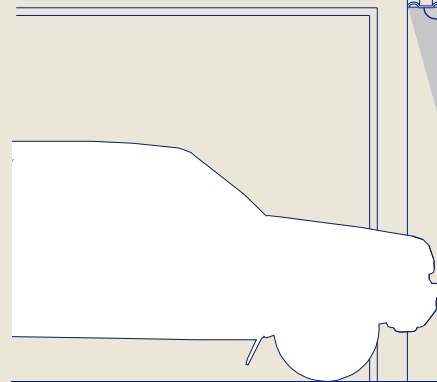


FLOOR PLAN



SECTION

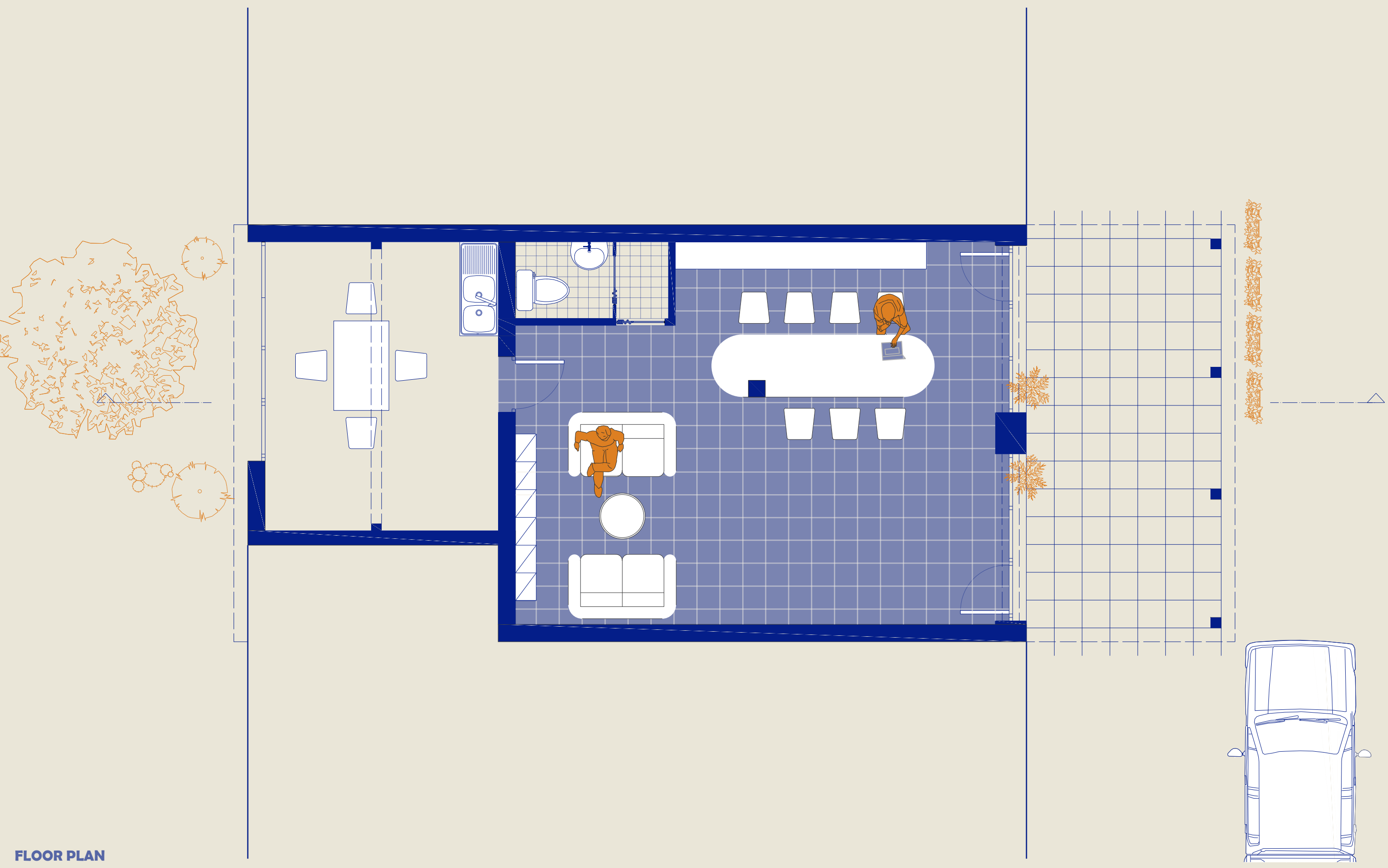
MAKEIO+



FRONT VIEW

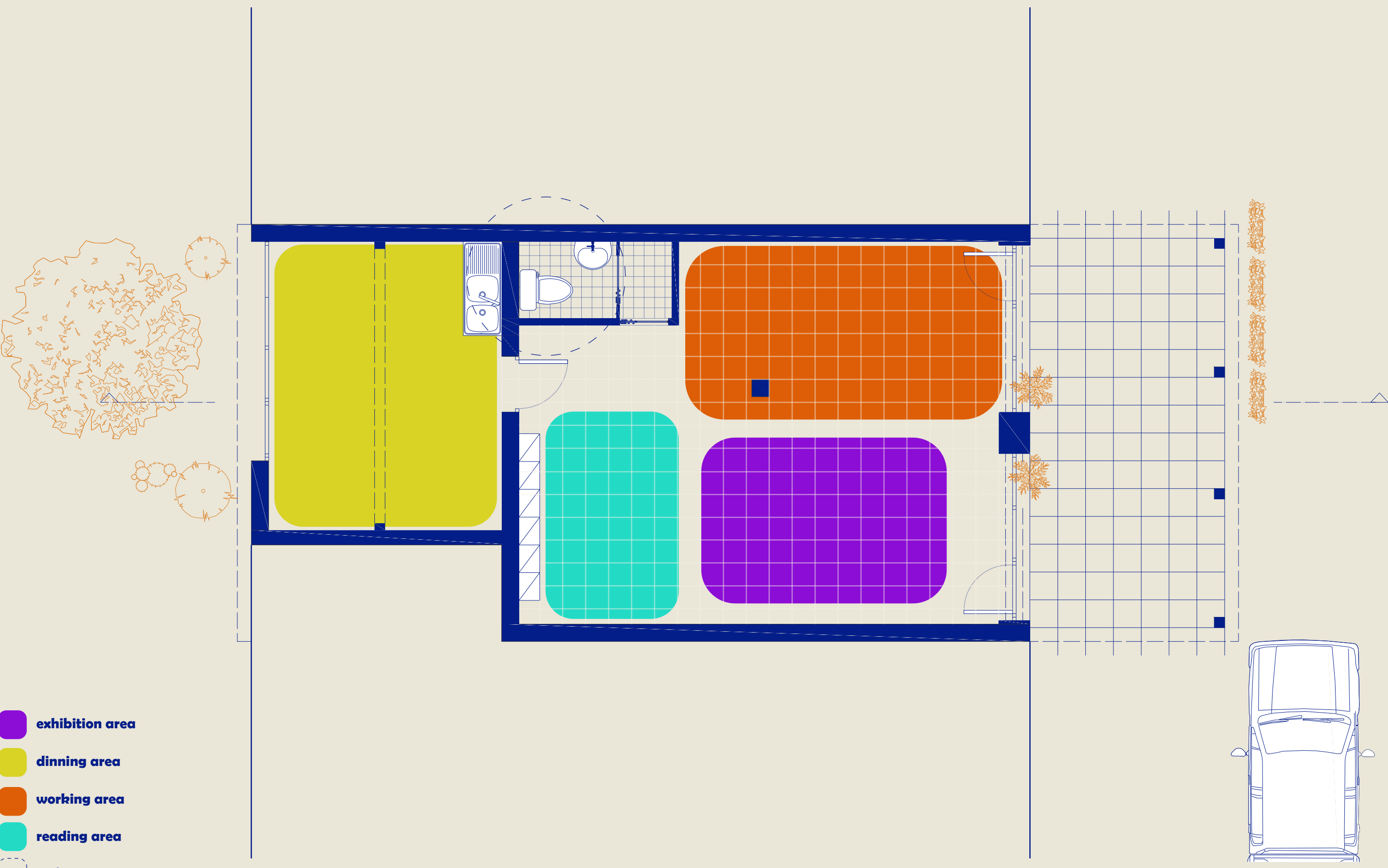


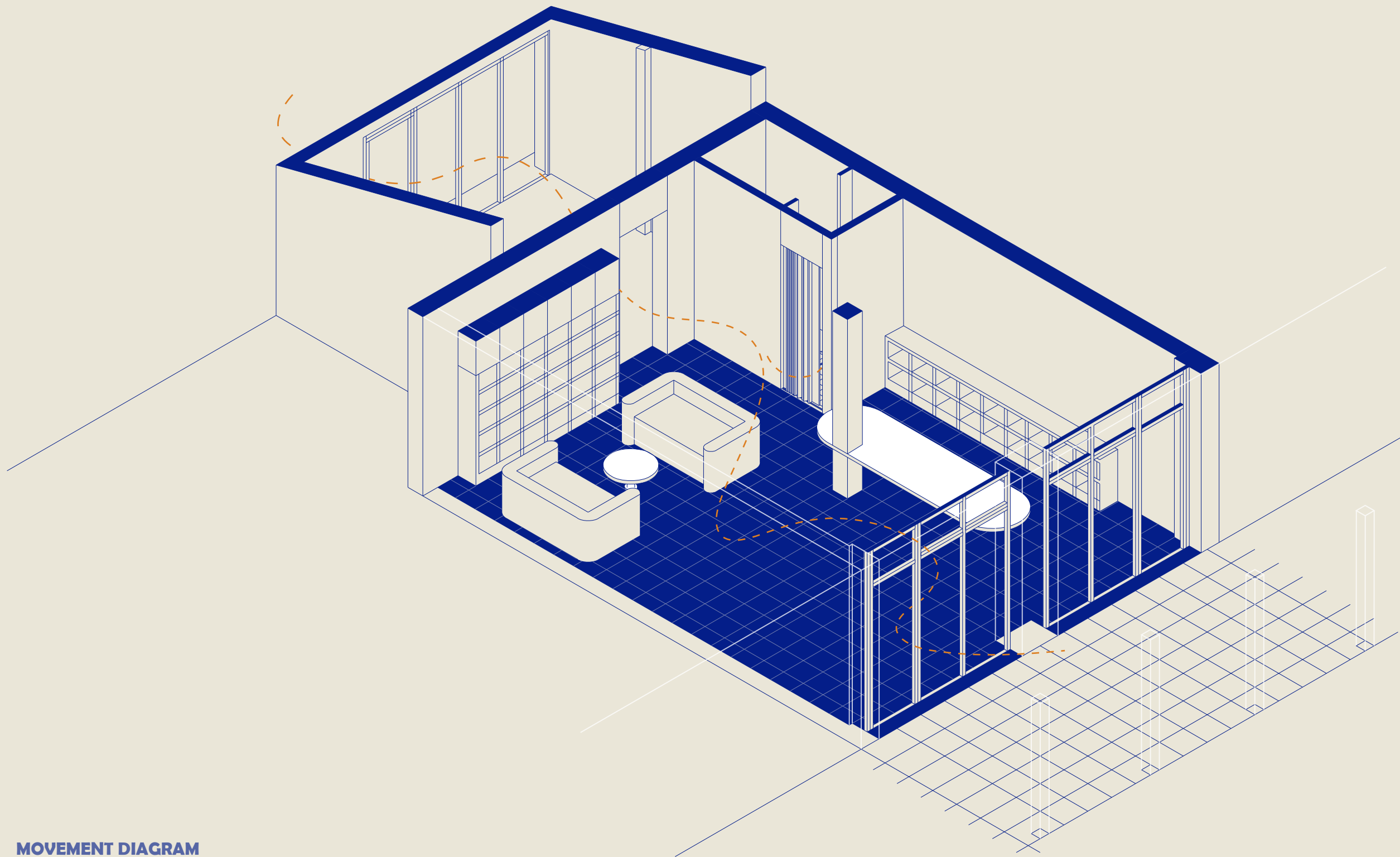
SECTION



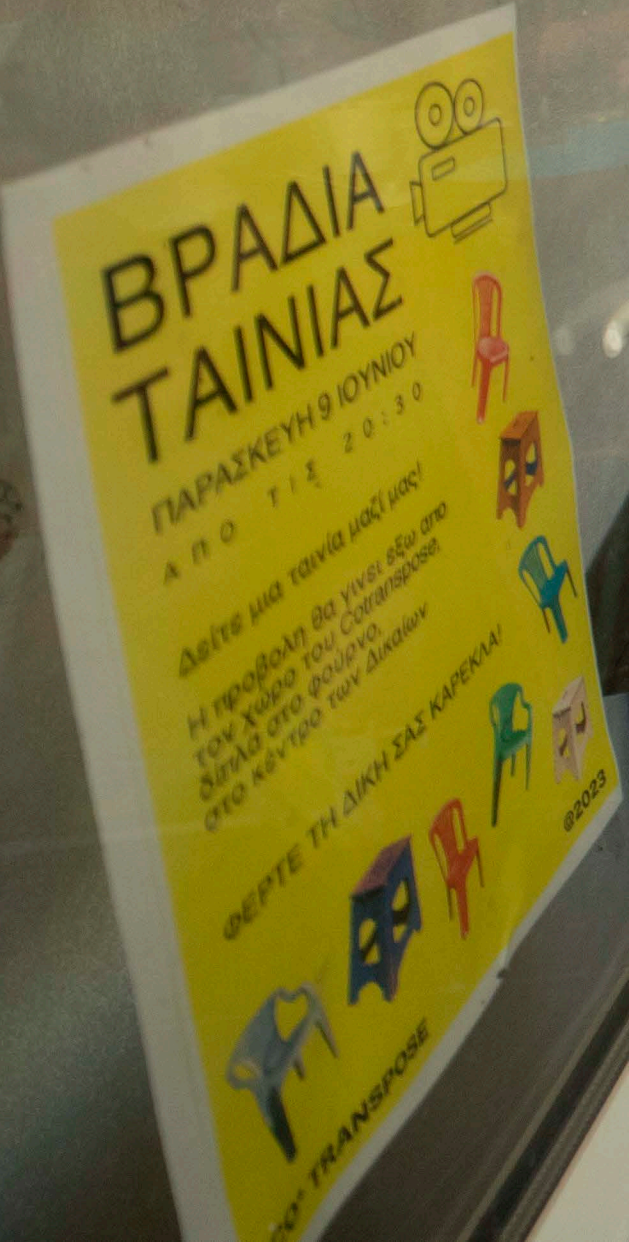
FLOOR PLAN

-  **exhibition area**
-  **dinning area**
-  **working area**
-  **reading area**
-  **water areas**





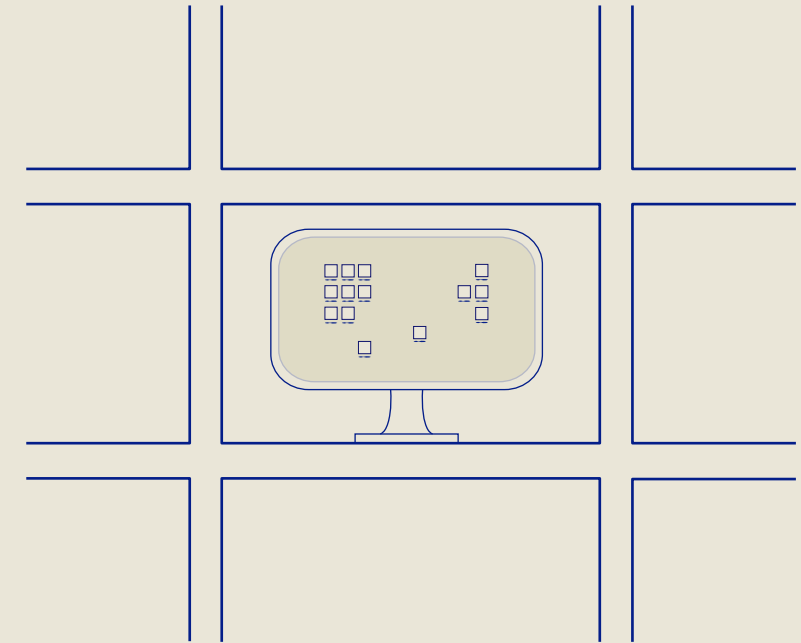
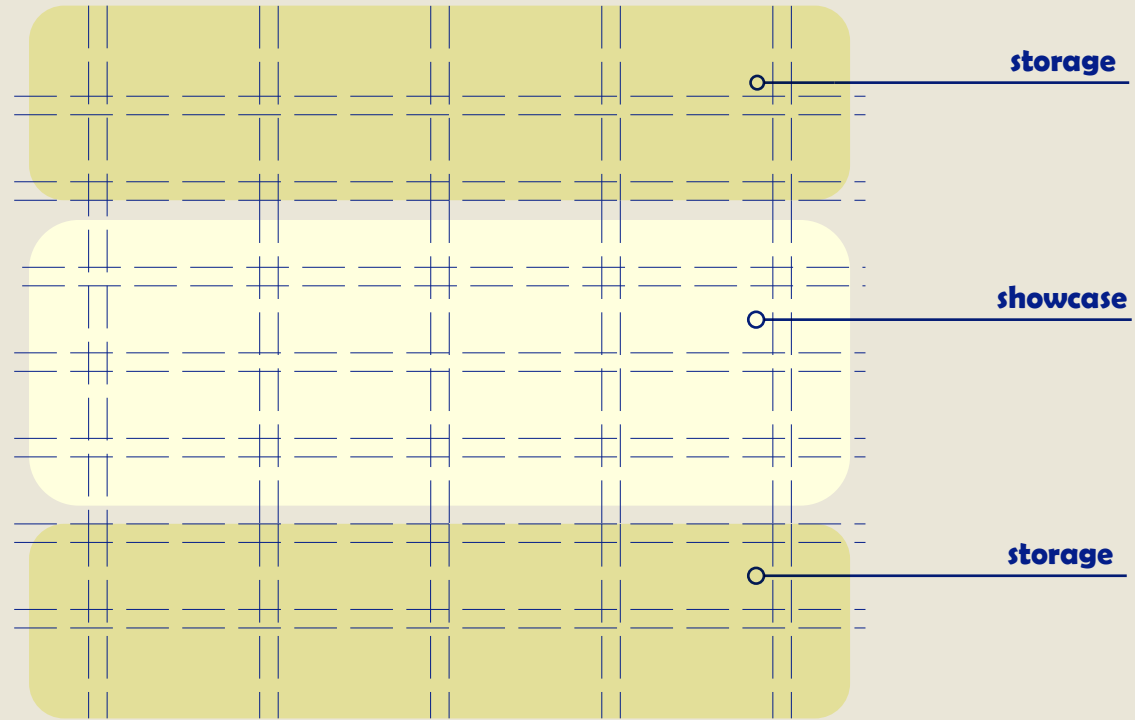
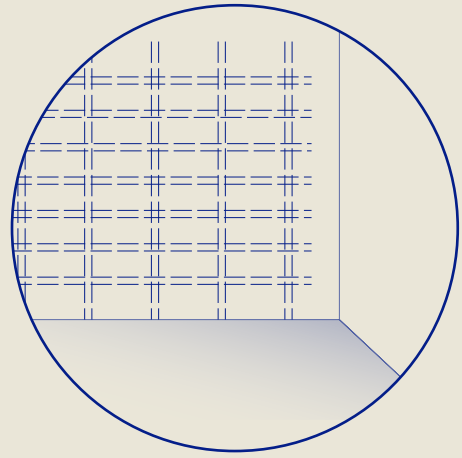
MOVEMENT DIAGRAM



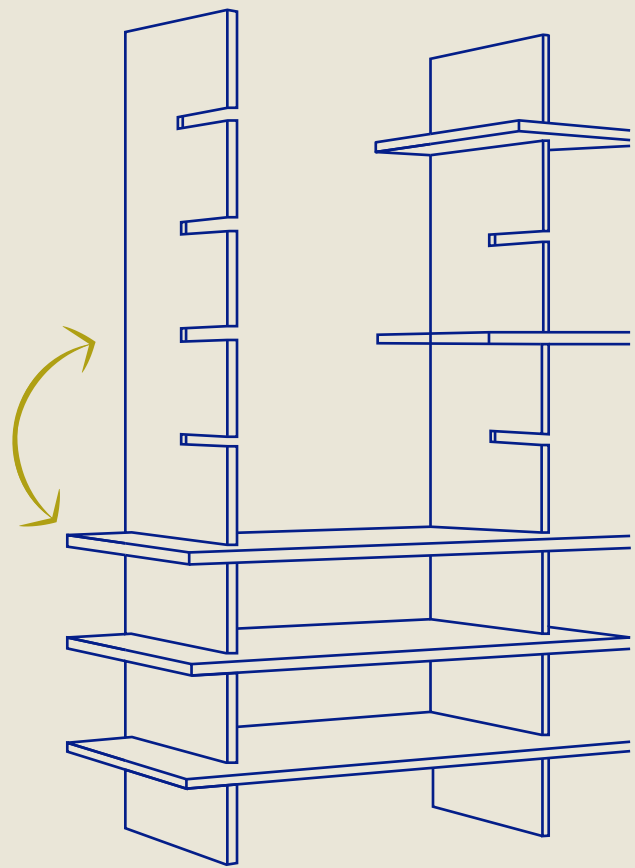


Co-lection

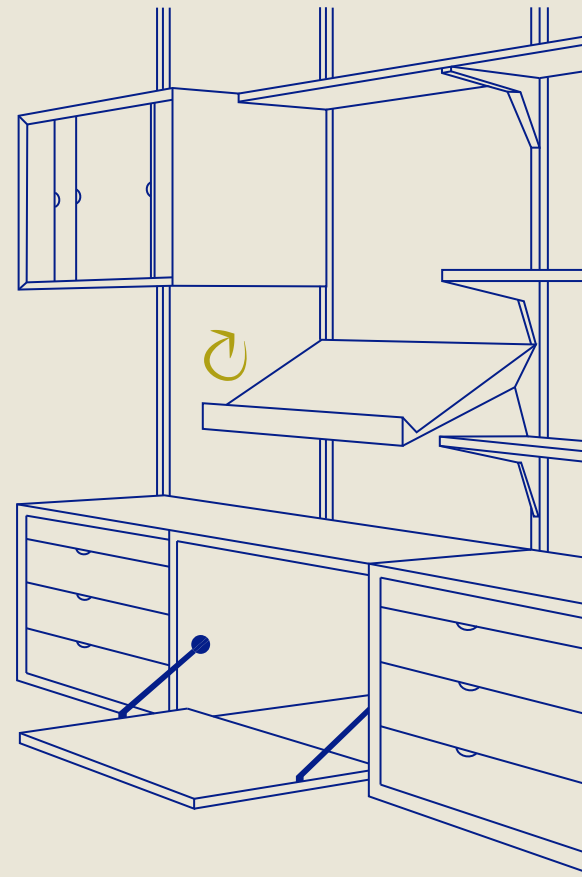
design elements



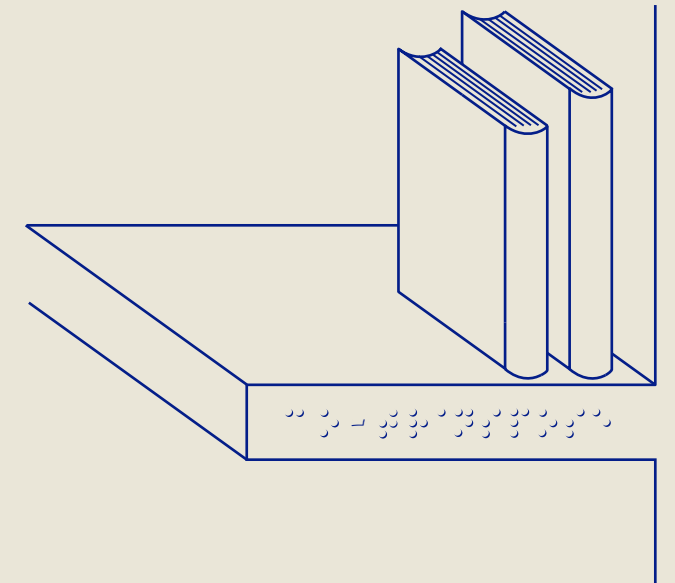
multimedia



adjustable



interactive



inclusive

Publication Co-Ilection

An occasionally produced publication (depending on need or around a specific project/program/theme). The publication will function as a tool to reflect, share, explore, and archive, not just as mere documentation. It will be a collection of narratives that archive and re-introduce the local, introduce the Cotranspose project and place it with the trans-local.

The publication is a micro-representation of the bigger idea of creating a living archive and an organic library with the same goal of collecting (trans)local narratives and knowledge.



Ideas for Co-Ilection Issue #1

By replacing the concept of patronage with that of feminist hospitality, it wants to move away from the sociocultural hierarchies paradigm to an extension of care ethics. (Part of Cotranspose's Mission&Vision)

Introduce the feminine point of view through the Cotranspose team.

Each Co-team member can contribute to the publication something that represents them as a person, which is also a reflection of the project. It can be a text, an image, a memory, a story, or a collage of things; anything is possible.

Collect also contributions from females within the local community, highlighting the feminine role in a highly patriarchal society and giving space to their narratives.

