

TEUFELSBERG  
TRANSFORMATION LAB  
DEVELOPMENT PLAN

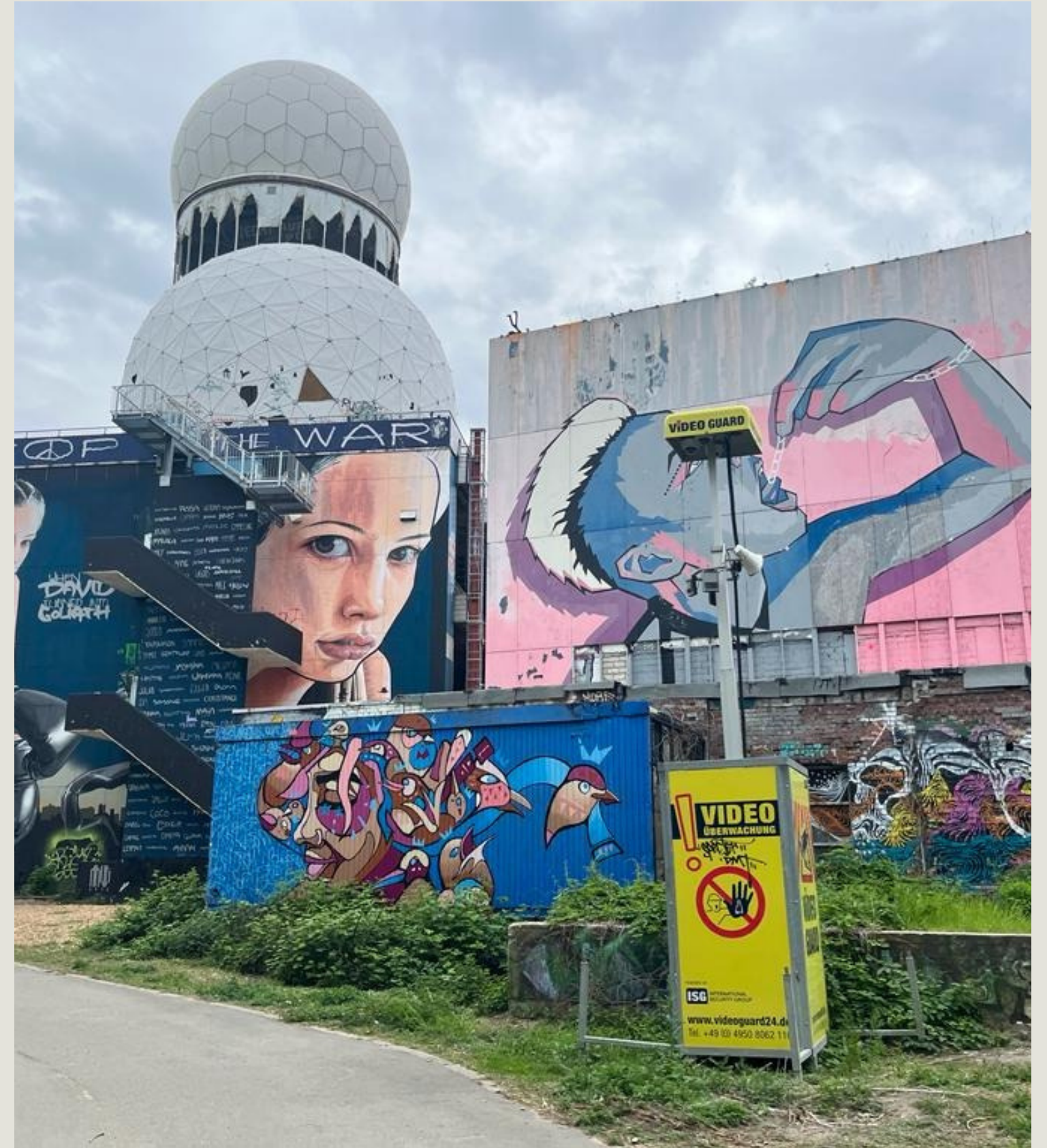


## Historical context of Teufelsberg

A historical lost space, an island in proximity to the city of Berlin and surrounded by dense forest and lakes. Teufelsberg used to be a hunting ground of the Prussian Empire, the building ground for a Nazi facility, a memorial hill made of the rubble from the war and ultimately a spy station during the Cold War. In its more recent history, investors sought to build luxury apartments and other commercially lucrative real estate projects. However, the place itself and, furthermore, a wide array of civil stakeholders defied all of these uses throughout history.

## Concept of a Transformation Lab

The TEUFELSBERG TRANSFORMATION LAB facilitates the creation of a collaborative transformation lab for policies and other transformative practices through a participatory process. Departing from conventional methods that often sideline civil society, this lab champions inclusivity, bridging gaps between activists, policymakers, and scientific experts.

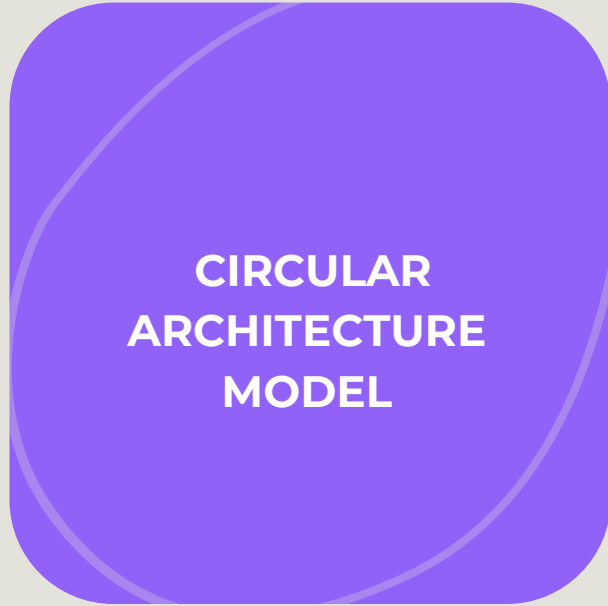


# Sustainability Goals



## ENSURING LONG-LASTING RELEVANCE

The participatory and bottom-up methodology engages multiple stakeholders enabling us to stay responsive to the pressing issues of our times.



## CIRCULAR ARCHITECTURE MODEL

As an independent, self-sustaining, and closed ecosystem, we create and test circular models in energy production and consumption, water management, and structure upcycling.



## (KNOWLEDGE) SHARING

The knowledge we accumulate is widely accessible, benefiting a diverse audience, and aiming to inspire and empower other sustainability initiatives.



## CREATION OF AN ECOSYSTEM

We foster a diverse multi-stakeholder ecosystem by actively involving various actors, creating adaptability and inclusivity for well-rounded decision-making, reflecting a harmonious and connected society.



## FROM LOST SPACE TO COLLECTIVE TRANSFORMATION

Revitalizing a space, fusing historical ruins with modern elements to symbolize collective transformation, all while enhancing the cultural experience and inspiring collaborators in the design process.

# Implementation Plan

## Approaching the Teufelsberg Transformation Lab ...

... with a transformation challenge (e.g. transformation of local policies) as an individual or representative of an organization.

Ongoing development of the physical infrastructure at Teufelsberg

Implementation through project partners, e. g. PHA ARCHITEKTEN BDA

Holding an event Participating

### Public Visitors

aprox. 1.600 visitors per day are expected during summer

- immersing in the history of Teufelsberg and the space itself, e.g. through the audio walk or the exhibited artefacts ("Wall of Transformation")
- meet, learn, observe, exchange, sense

### Event Calender

- hosting different events at Teufelsberg open to the public
- political discussions, residencies, open talks, workshops, cultural and art events

### "Co-Design Sessions"

- monthly "Co-Design Session"
- open invitation to people from different work-fields and backgrounds
- ongoing conversations and idea building on what policy making is and how to build up a policy lab

### Mobile Teufelsberg Showroom

- open space at Teufelsberg
- exchange format that can be part of fairs or other public events
- acquisition of new project partners, private, and public investors

### Accessible Artefacts

"Artefacts" are learnings and insights from all interactions at the lab and can be artworks of any kind. Their function is to make transformation processes accessible and participatory. They are exhibited in the space, such as at the "Wall of Transformation" or the audio walk

Building on previous sessions & events

Building on previous sessions & events

Showcasing artefacts

Showcasing artefacts

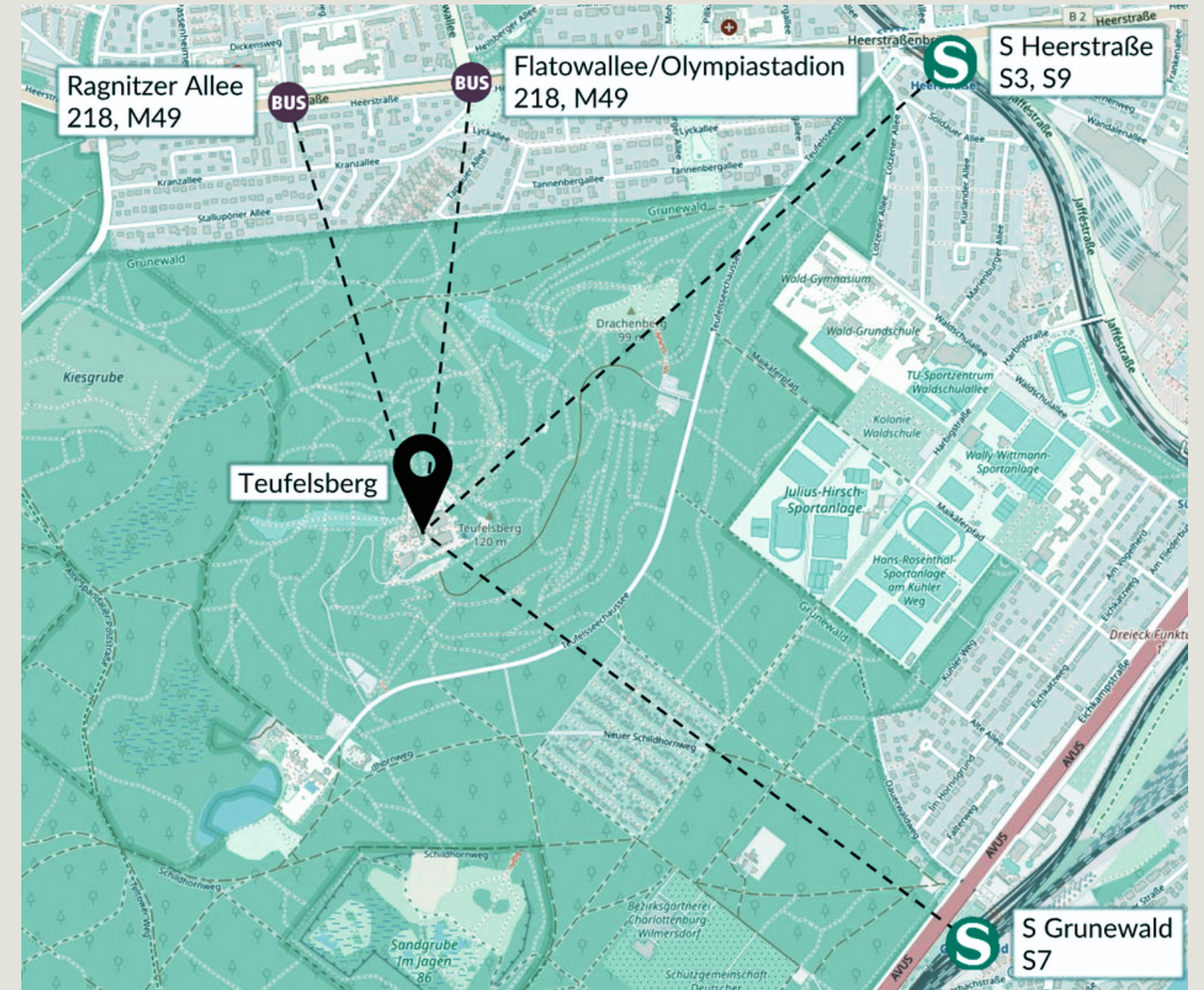
Also derived from the artefacts are needed iterations and the ongoing identification of infrastructure Needs

## Location of the Transformation Lab

The TEUFELSBERG TRANSFORMATION LAB will be situated on the Teufelsberg hill, close to the city of Berlin, surrounded by a landscape conservation area. The activities of the lab will take place within the facilities of the old spy station, which is an official heritage site. During the first year, we will focus on implementing different formats such as “Co-Design Sessions” and other events on-site, to kick off the participatory process of creating the lab.

Even though the space is unique due to its history and location, the concept of creating the TEUFELSBERG TRANSFORMATION LAB itself, can be replicated. The principle idea of re-appropriating collective sites and turning them into spaces for democratic, participatory transformation through our framework can be applied to other localities. However, a fine attunement to the historical and site-specific conditions of a place is crucial to the replication of this project.

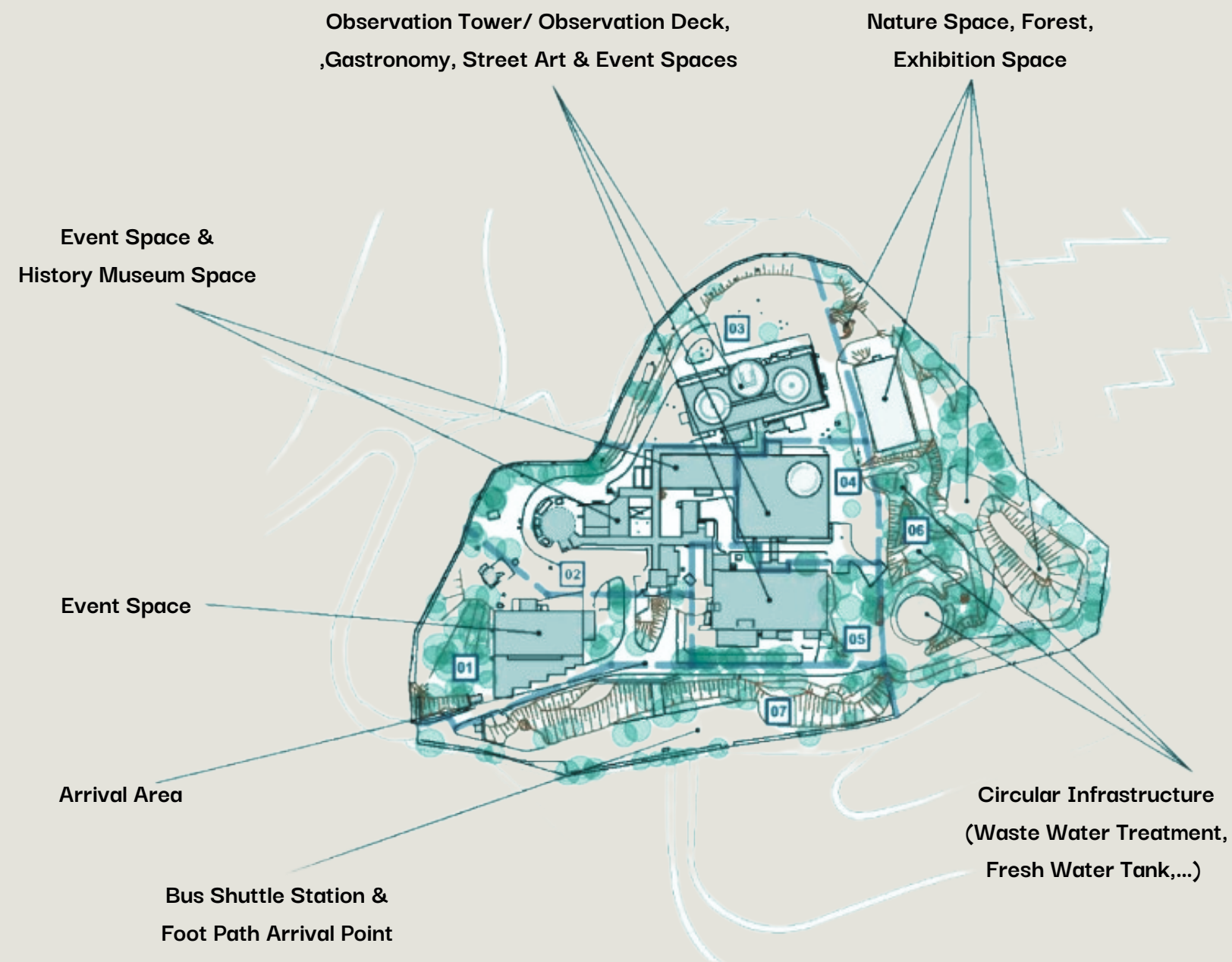
In the future, TEUFELSBERG TRANSFORMATION LAB will be one of the go-to locations for summits and events around transformation for Berlin. Through its proximity to the capital it will also become a safer space for participatory transformation design on European scale.



The TEUFELSBERG TRANSFORMATION LAB is already connected through public transport. At the S-Bahn stations Grunewald, Heerstraße and multiple bus stations. The MOBILITY INSTITUTE BERLIN enhanced this accessibility by creating a concept for more inclusion with a shuttle (e-)bus. As well as a barrier free infrastructure to and from Teufelsberg.

# Design of the space

The TEUFELSBERG TRANSFORMATION LAB has its home on the site of the former spy station on the top of Teufelsberg overseeing Berlin and Brandenburg. In this unique and inspiring build structures, we will work closely with °PHA ARCHITEKTEN BDA to create highly adaptable and sustainable infrastructure and use of the space for visitors, “Co-Design Sessions”, and the hosting of events, as well as accommodating the artists working there.



## Mobile Teufelsberg Showroom

In addition to the physical and stationary site of the TEUFELSBERG TRANSFORMATION LAB at Teufelsberg, we are working on a concept for a mobile Teufelsberg showroom. This mobile space will make the lab even more accessible by bringing it to other places. Imagine a roadshow of all the artefacts created based on the ideas and solution prototypes developed at the lab.

## Stakeholder Map

These **organisations** have played a **pivotal role**, among the citizens, scientists, activists, politicians and policy makers in **co-creating with us\***. They were shaping the **participatory process** of the TEUFELSBERG TRANSFORMATION LAB.

\* Support in conducting interviews, “Co-Design Sessions”, user research, peer review, feedback and aligned visions.



# Incubation: First Early Concept of the Teufelsberg Transformation Lab

Our early concept towards creating a bottom-up transformation lab included to design a participatory development process, together with the final users. Those are the general public, activists, scientists and policy makers. The early concept consists of three different parts, the “Co-Design Sessions”, an audio walk and a “Wall of Transformation” which are connected and lean into each other. It can be easily implemented and scaled in terms of advancement and embeddedness into the space of Teufelsberg and the formats taking place there over time.

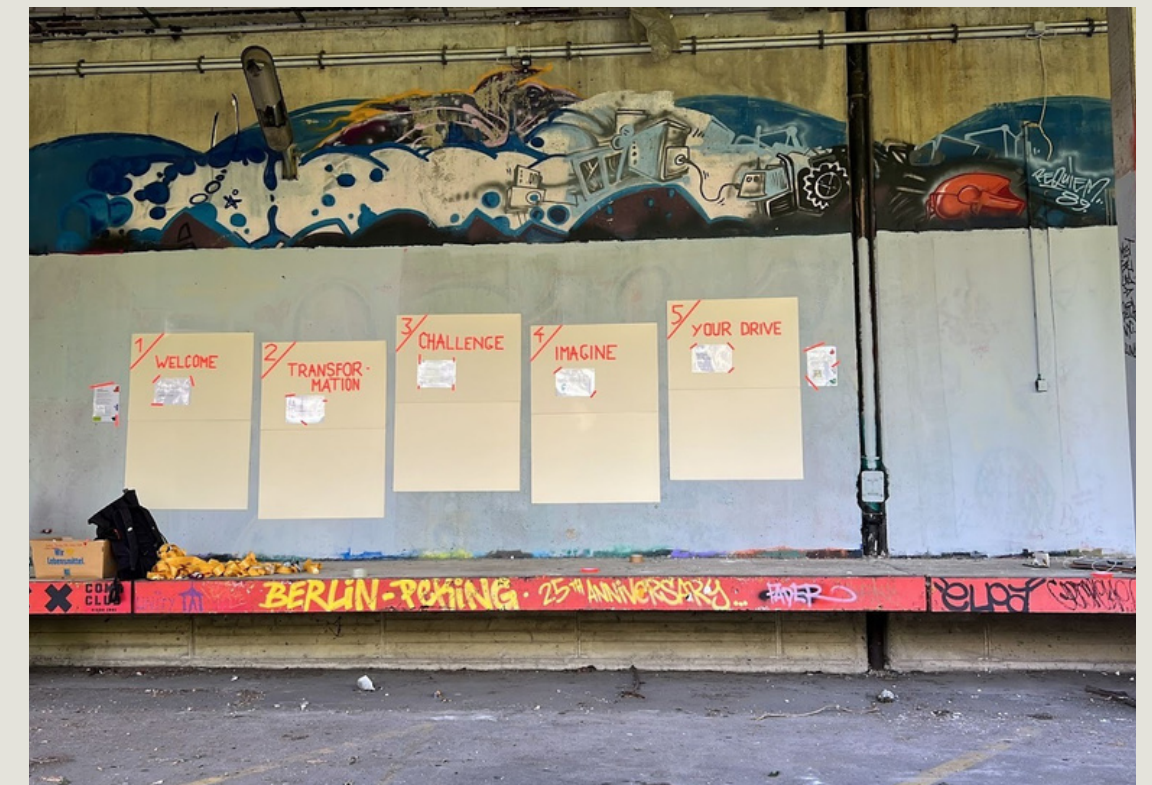
**“Co-Design Session”**



**Audio Walk**



**“Wall of Transformation”**





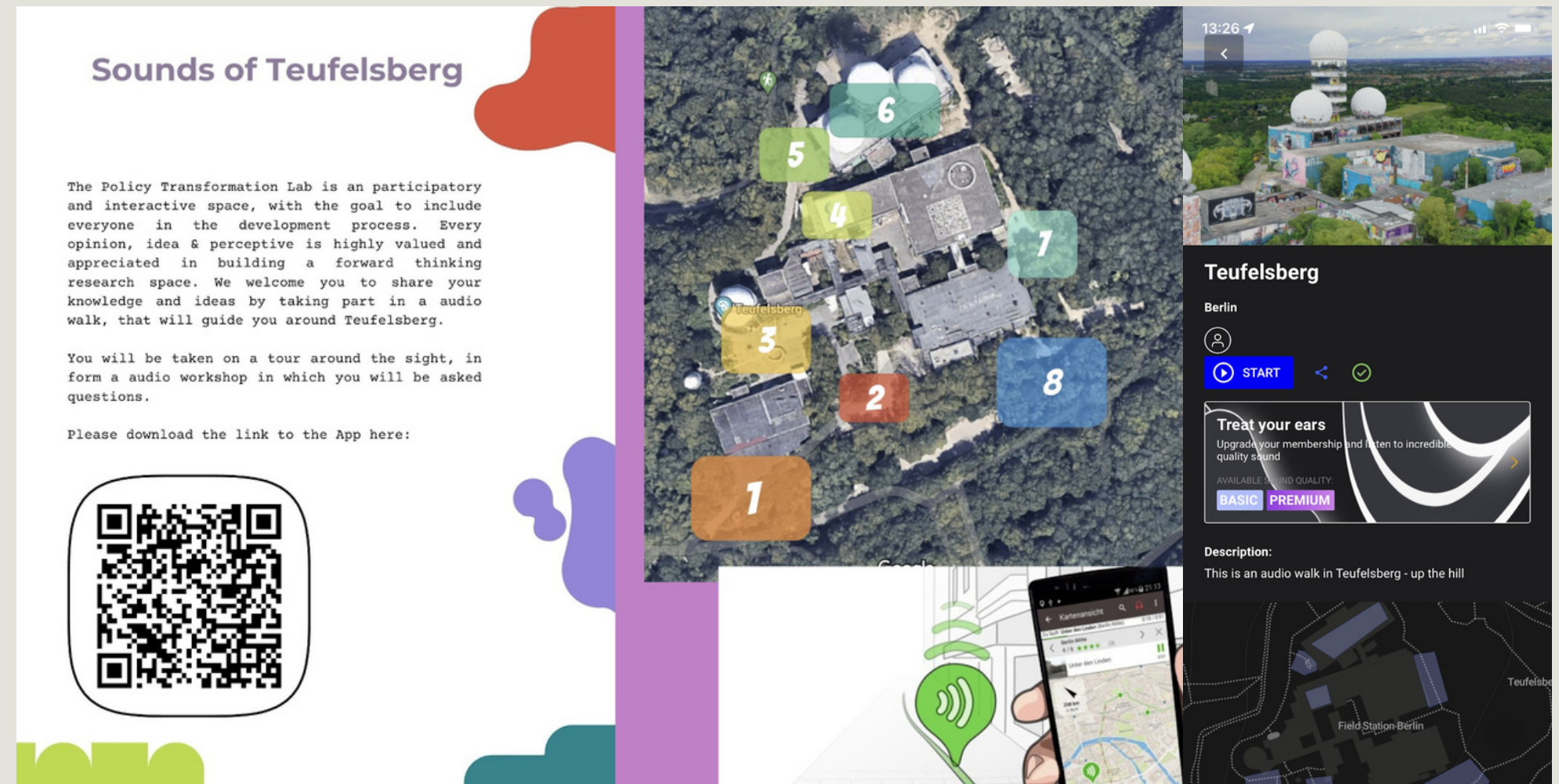
# First "Co-Design Sessions"

Central to our process, as already refined and tested, is the co-designing session. This may manifest as a regular recurring format or as individual events. Here, a diverse array of stakeholders, policy makers, activists, and participants interested in participatory processes convene at Teufelsberg to collectively exchange and deliberate on the conceptualization of a policy transformation lab. The format of these sessions can be either theme-based or more general in nature.



# First Version of Audio Walk

One of our prototype components is the audio walk, a 20-minute journey that invites visitors to experience Teufelsberg on an emotional, informative, and personal level. This transformative excursion encompasses eight distinct stations, each prompting reflection on specific questions or encouraging interaction with the surroundings. Designed for a visceral connection with the site, the audio walk delves into its past and envisions the potential it holds for the future. The text of the audio walk is attached in the appendix.



# First Version of the "WALL OF TRANSFORMATION"

Building upon the introspective and inquisitive nature of the audio walk, we introduce the "Wall of Transformation". This permanent fixture, affixed to a wall of Teufelsberg, encourages visitors and participants to contribute their ideas, inspirations, and thoughts to a communal space. This dynamic platform facilitates the sharing and exchange of transformative concepts, fostering a collective repository of forward-thinking insights.



## Beyond Teufelsberg: The Mobile TEUFELSBERG TRANSFORMATION LAB Showroom

The Mobile Teufelsberg Showroom acts as a direct bridge, bringing the transformative energy of the Teufelsberg Transformation Lab to your other places. Beyond showcasing artefacts and explaining "Co-Design Sessions", it will help us foster partnerships, and collaborations and increase the reach of the lab



## Initial feedback from early concept stage

Overall, we received the feedback, that the solution we presented is **easily implementable and scalable over time**. We perceived the commitment to dive into **further testing and implementation** by our partners. Our first testing users, specifically the participants of the “Co-Design Sessions”, echoed **the need for such a space**.



## Participants

At the “Co-Design Sessions” were

- two researchers,
- one policymaker,
- two architects,
- two artists & environmental activists
- two citizens from the immediate area,
- one artist & and permaculture gardener,
- and one curator & and political activist.



# Next Steps

**1. Community Building and Promotion:** Promoting the concept through events and online presence to engage a supportive community.

**2. Strategic Topic Selection and Testing:** Focusing on relevant topics and testing various formats in diverse sessions..

**3. Enhanced Stakeholder Engagement:** Continuously improving participatory processes for active stakeholder involvement.

**4. Method:** Effective Use of Artefacts and Needs Identification Using “Co-Design Sessions” to identify users' needs and demonstrate a commitment to problem-solving.

**5. Development Strategic Collaboration and Infrastructure:** Pitching the concept at events, developing a Mobile Showroom, and collaborating with °PHA ARCHITEKTEN BDA for infrastructure implementation.

➔ **MAKING A  
VISION REALITY.  
THROUGH A  
THRIVING  
COMMUNITY FOR  
LASTING IMPACT  
THROUGH  
ENGAGEMENT,  
INNOVATION,  
&  
PARTICIPATION.**



➡ TOGETHER,  
WE COULD CREATE  
A SPACE OF  
BURSTING  
POLITICAL &  
SOCIAL  
BUBBLES.  
FOR  
RECONNECTION  
& SUSTAINABLE  
TRANSFORMATION.

“Midjourney” AI created photos of the TEUFELSBERG TRANSFORMATION LAB in 2025

# TEUFELSBERG TRANSFORMATION LAB

A participatory project by

Marko Kagioglidis  
Alex Wolf  
Wanda von Bremen

Partners who trust us

