

Nad Dzherelom

results, outcomes and impacts



Lviv city
council





Former quarry on satellite image 1966 year

Source: <https://oldmaps.dp.ua/lviv/#15/49.7902/24.0406>

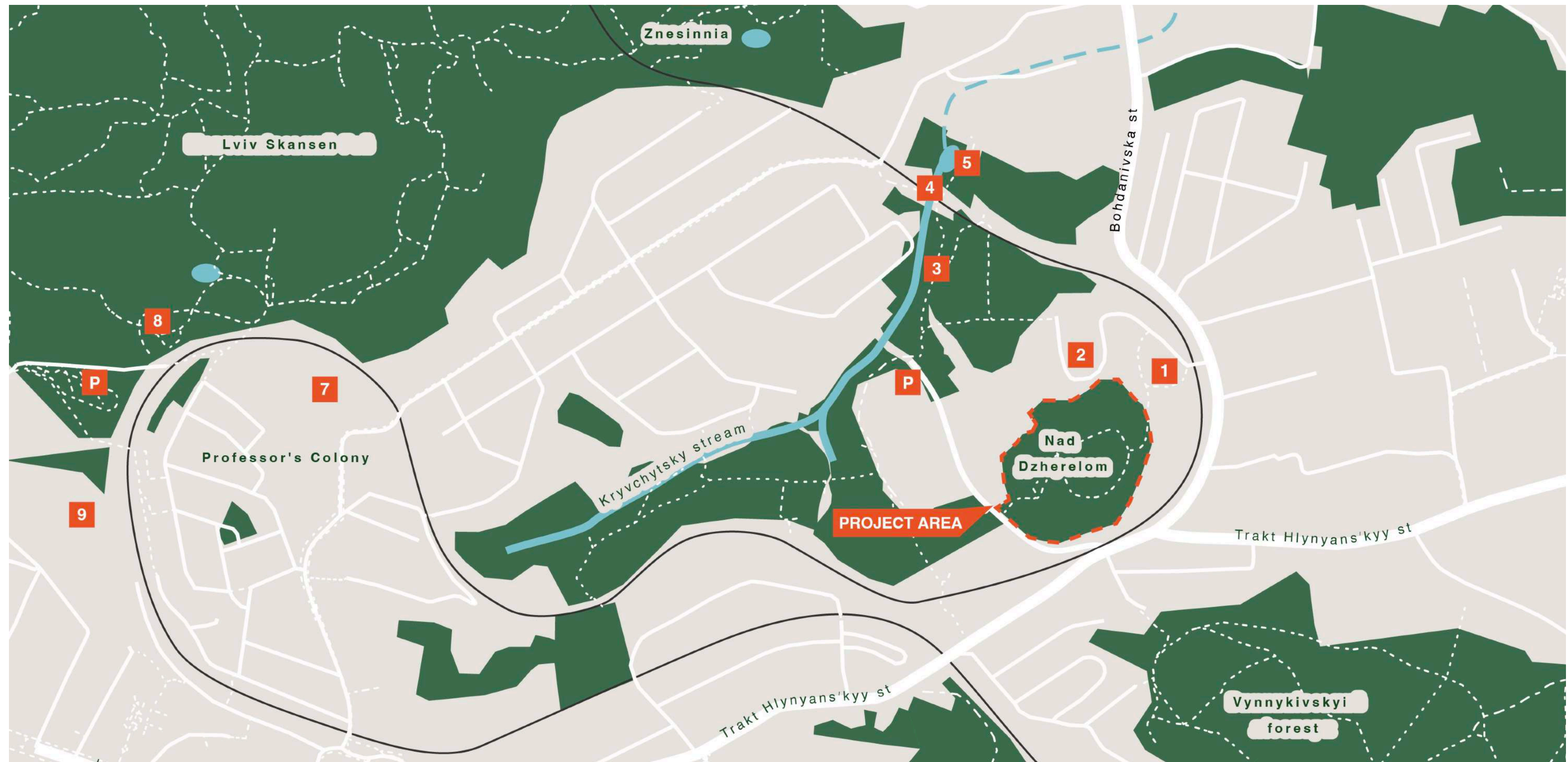


Project site on satellite image before the start of the project



Nad Dzherelom recreation area masterplan

Results



One new location in the city for recreation. The project is a connecting link in the network of green areas of the city



A neglected and unused space



Public space for recreation and recovery



A dirt path trampled by locals



A gravel path with places to rest



Littered area with stagnant water



One new lake in the city

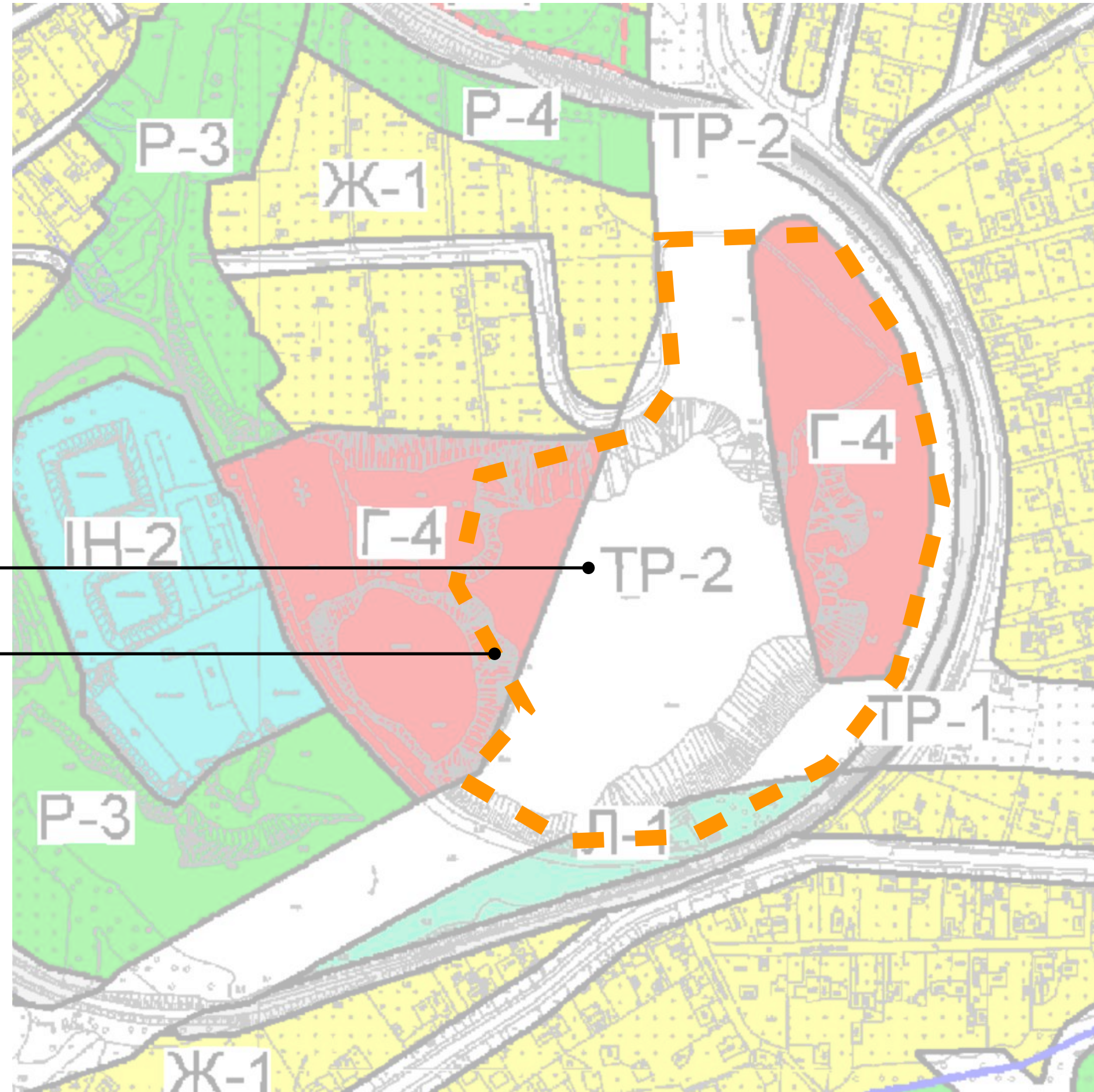


New children's playground covered with bark. The terrain and existing trees are preserved



New sports ground covered with crushed stone

Outcomes



transport interchange
project «Nad Dzherelom»
area boundary

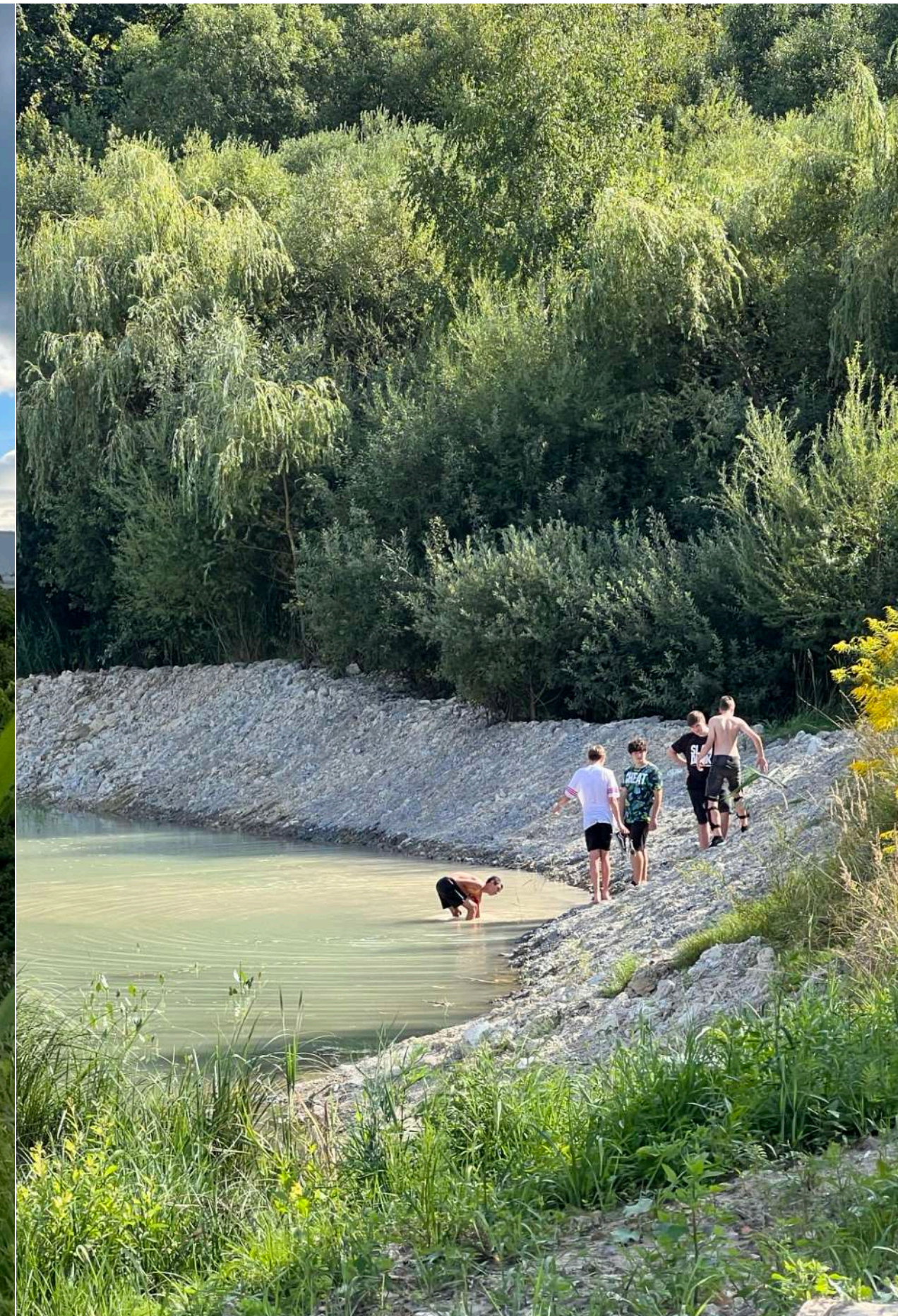
a fragment from urban planning documentation

After the implementation of the project, on 2023 September 29, a decision was made to revise the urban planning documentation in order to optimize large transport interchange and preserve of natural areas.

Impact



Creating a community for the community and internally displaced persons



Creating a place to relax and reconnect with nature



Promoting the protection, restoration and regeneration of natural ecosystems. Conducted tours for 22 local architects to promote the use of such nature-oriented sustainable solutions in other urban projects



Promoting the protection, restoration and regeneration of natural ecosystems. Conducted excursions for 40 Territorial Community representatives from all over Ukraine



Rusalka Dnistrova space



Hasyna square



sports ground on Yosyfa Slipoho



temporary housing

Nad Dzherelom project became an example for the improvement/revitalization of other urban areas during the year where a similar approach and technology was used



Nad Dzherelom project became an example for the improvement/revitalization of other urban areas. It is planned to apply a similar approach in the largest city park with an area of 150 hectares. Visual representation of planned solutions